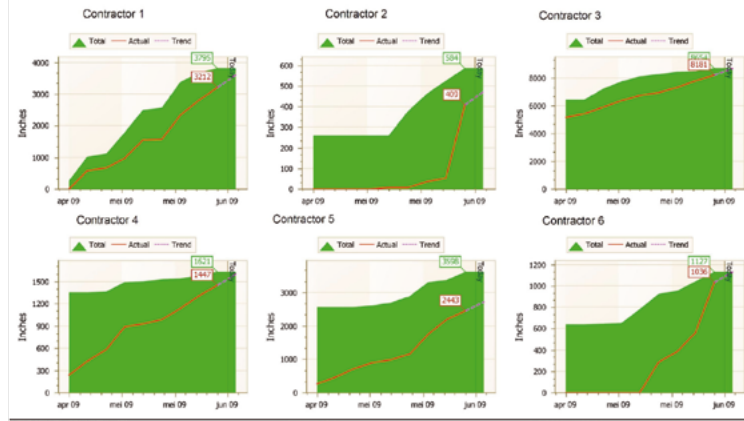


Weld-IT[®]



Control welding
activities / NDE

WELD INCHES PROGRESS KPI



Software for the preparation and execution of welding and NDE work
Weld-IT[®] is a software application developed for the preparation, execution and quality control of welding. With this application it is possible for all parties (welding contractors, NDE contractors, welding inspectors i.e.) to work in one system concerning: progress and status control of piping and equipment welding, NDE and associated quality control and documentation.

Some advantages:

- Easy installation and clear user interface, as stand-alone or multi-user on own server or Roser SaaS solution.
- All welding activities can be viewed and analyzed in detail.
- All isometric, welding lists, research, NDE, certificates etc. are digitally attached and compiled into one completions file.
- Manage your certificates and related material, transfer it to your welding list data without retyping.
- An overview of all welding activities per isometric, both shop and field.
- For each project a complete overview of welding activities, NDE and PWHT.
- Create your welding lists with the easy-to-use copy function.
- Historical data can easily be stored in the Weld-IT[®] archive and be printed including the necessary certificates and records.

Roser Suite[®]

Weld-IT[®] is part of the Roser Software Suite[®]. This set of multiple software applications comprises of: Blind-IT[®], Plan-IT[®], Time-IT[®], Scope-IT[®], Improve-IT[®], Change-IT[®] and Permit-IT[®]. All these applications integrate seamlessly with Roser Systems[®] and are mutually compatible. In addition all applications can be used as stand-alone.

Our mission:

Developing innovative software that adds value for our clients. Continue to improve this software based on (practical) experience and recommendations of our users with the aim to achieve an efficient, qualitative and safe preparation and execution of:

- General maintenance
- Maintenance and construction projects
- Daily and preventive maintenance

RoserConSys[®] B.V.
Burg. de Raadtsingel 67
3311 JG Dordrecht
The Netherlands

+31 (0)78 - 614 62 88
@ info@roserconsys.com

www.roserconsys.com

